

Release Information CTE 2.3.20

Abstract

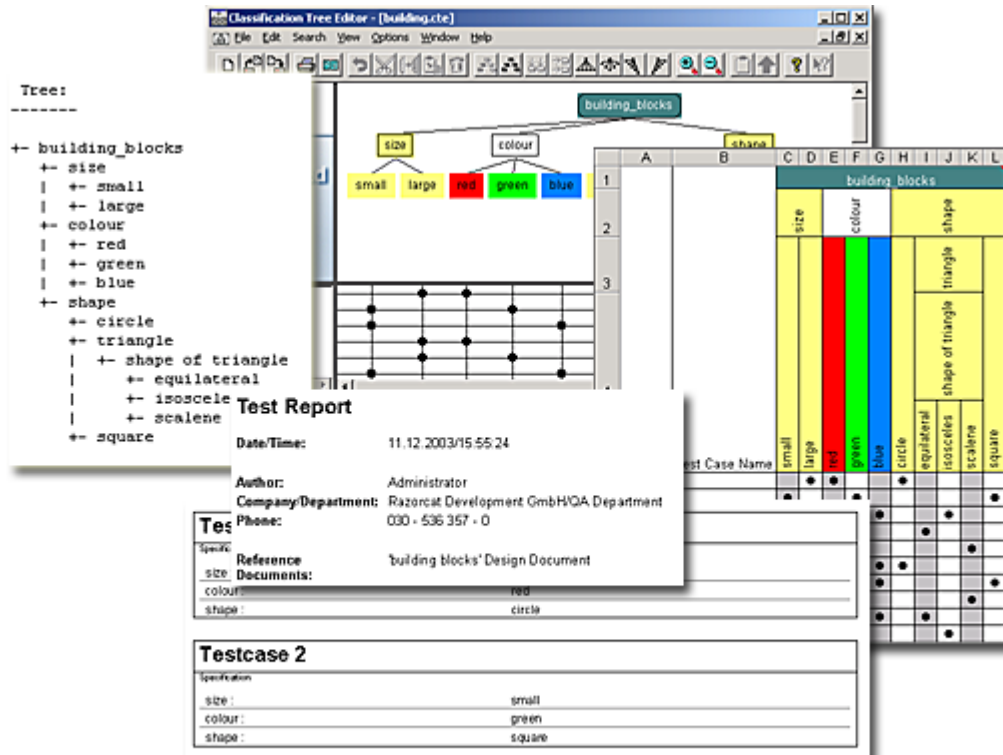
This document gives an overview of the new features introduced within the CTE version 2.3.20 and the problem fixes since version 2.3.16. You may run the 2.3.20 setup on any installation of CTE to update to version 2.3.20.

Table of Contents

Abstract	1
Customizable Reports in Word, Excel, ASCII	2
Warning Visualization	3
New Keyboard Shortcuts and Modifier Keys	4
Restructuring Trees without Loosing Marks.....	4
Coloring Trees	4
Tooltips for Specifications of Marks	4
Problem Fixes.....	4
Mark Types	4
Reports	4
Patch 2.3.17 Problems.....	4

Customizable Reports in Word, Excel, ASCII

The new CTE reports are based on XML files containing all necessary information of the CTE tree and test items. Customizable Python scripts allow reports to be created in Word, Excel and ASCII format.



The screenshot displays the 'Classification Tree Editor' window. On the left, a tree structure is shown:

```

Tree:
-----
+- building_blocks
  +- size
  | +- small
  | +- large
  +- colour
  | +- red
  | +- green
  | +- blue
  +- shape
  +- circle
  +- triangle
  | +- shape of triangle
  |   +- equilateral
  |   +- isoscele
  |   +- scalene
  +- square
    
```

The main window shows a graphical representation of this tree with nodes for 'size' (small, large), 'colour' (red, green, blue), and 'shape' (circle, triangle, square). Below the tree is a grid with black dots representing test cases.

Overlaid on the interface is a 'Test Report' window with the following details:

- Date/Time: 11.12.2003/15:55:24
- Author: Administrator
- Company/Department: Razorcat Development GmbH/QA Department
- Phone: 030 - 536 357 - 0
- Reference Documents: 'building blocks' Design Document
- Test Item: colour: red, shape: circle

Below the test report is 'Testcase 2' with the following specification:

```

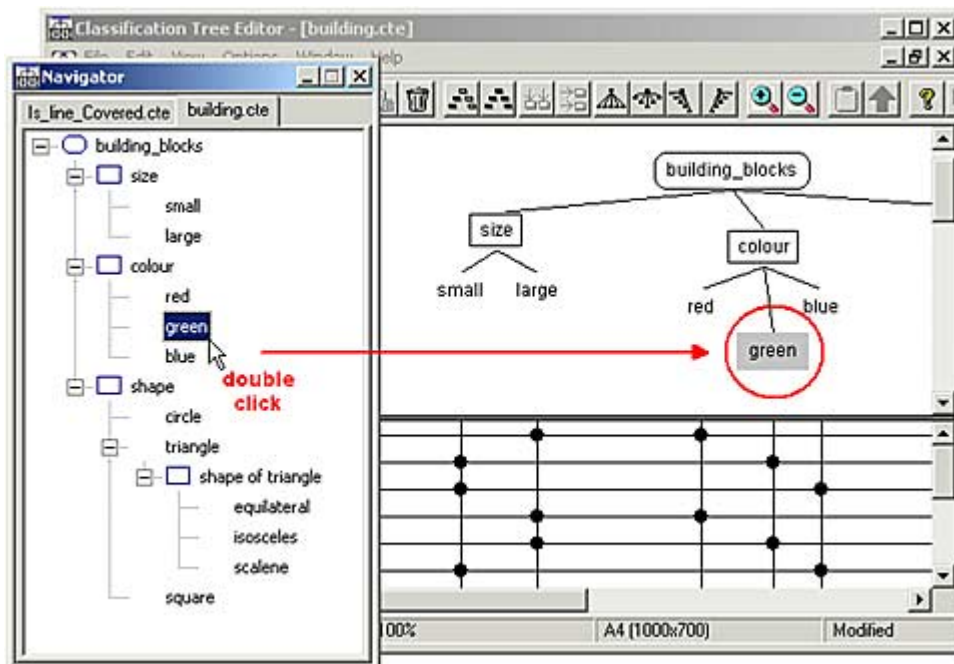
Testcase 2
-----
Specification
size: small
colour: green
shape: square
    
```

In the background, an Excel spreadsheet is visible with columns for 'size', 'colour', and 'shape', and rows for 'small', 'large', 'red', 'green', 'blue', 'circle', 'equilateral', 'isosceles', 'scalene', and 'square'.

Navigator Window

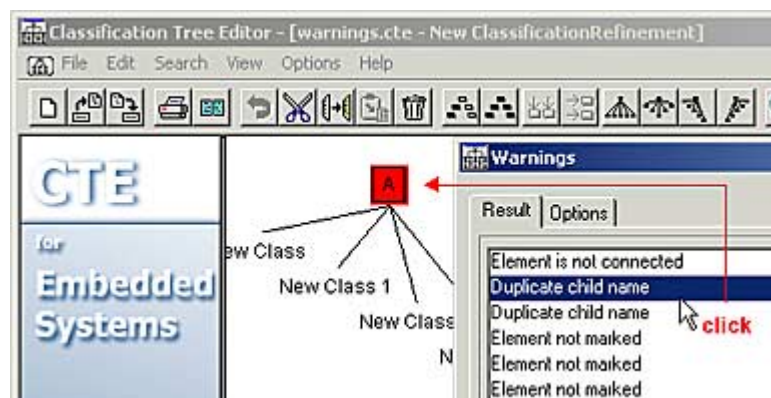
The navigator window allows browsing through the whole classification tree in a separate window. Double clicking on the navigator tree nodes opens the respective refinement window, if necessary.

Tree nodes may be moved within the tree and refinements without losing mark settings in the combination table. Possible invalid mark settings will be displayed in red and may be checked and corrected later using the enhanced checking feature like described below.



Warning Visualization

The warnings dialog displays all warnings in a list and visualizes any selected warning within the drawpad, tablepad or test item list. Refinements will be opened automatically ensuring visibility of items affected by a warning. Red blinking nodes or test items indicate problems or missing settings and allow easy correction or adjustment.



New Keyboard Shortcuts and Modifier Keys

The enhanced keyboard shortcuts allow creating and modifying classification tree elements without mouse interaction. Also, navigation through the tree from one element to another may be performed using the cursor keys.

The **Shift** and **Alt** modifier keys allow enhanced mouse operations, like redefinition of parent or moving and reconnection of tree nodes within the tree or refinements.

Restructuring Trees without Loosing Marks

Redefinition or changing of parent relationships of tree nodes do not further influence the marks set within the combination table. Also, reconnecting nodes to new parents keeps all marks. This may lead to conflicting mark settings, which may be resolved using the new warning visualization dialog described above.

Coloring Trees

Each tree node may be assigned a color for better overview within the classification tree. The color attribute will be inherited for child nodes unless otherwise set.

Tooltips for Specifications of Marks

For each mark within the combination table, a tooltip may be displayed showing the resulting test item specification text. This is especially useful for refinement marks, since the entire specification text for the refinement (including all child marks) will be visible when moving the mouse over the respective mark.

Problem Fixes

Mark Types

The mark type settings within the combination table were not saved to file. All marks were reverted to the default mark type when loading a file.

Reports

There are some new report style files available for use with office 97. The reduced functionality of Office 97 will now be handled during report generation.

Closed test sequences will now also be reported correctly.

Patch 2.3.17 Problems

Moving tree elements between subtrees could cause problems, when reloading the CTE file. This error was introduced by the above patch version and has now been fixed.